

Report of the Biological Survey of Mutsu Bay.

14. *Melitodes mutsu*, a new Gorgonid-Coral.<sup>1)</sup>

By

HIROMU MINOBE.

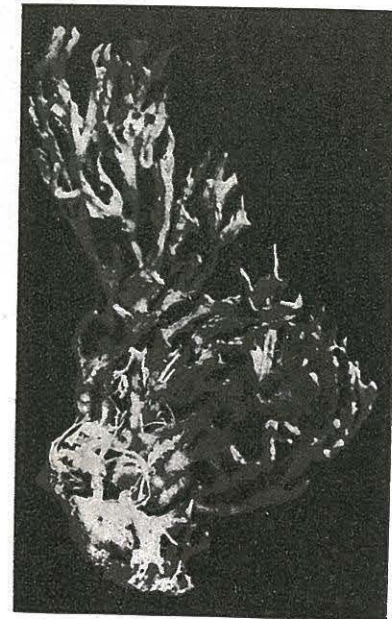
(Zoological Institute, Faculty of Agriculture, Tôkyô Imperial University.)

(With two Text-figures.)

Through the courtesy of Professor HÔZAWA I had occasion to examine a colony and a few fragments of a Gorgonid-coral from Mutsu Bay. They were secured by Professor TAHARA on the coast of Bentenjima, Ômasaki, as well as by Professor HZÔAWA near Sai, Takaisozaki. On examination the specimens before me proved to be of a species of the Genus *Melitodes* hitherto unrecorded. I propose to call it *Melitodes mutsu*.

*Melitodes mutsu*, n. sp.

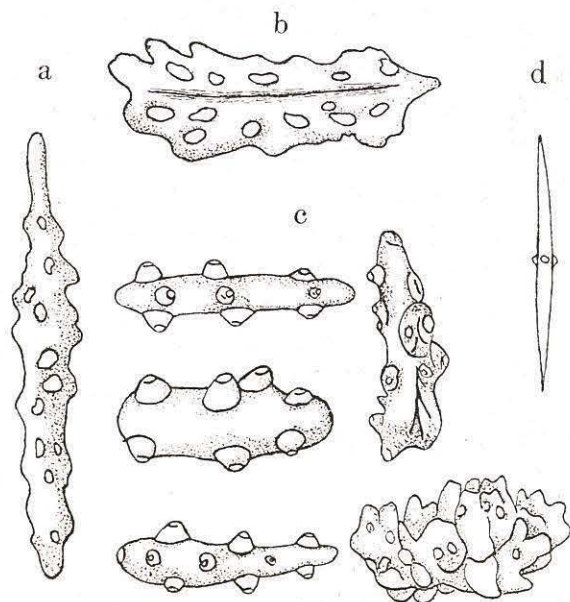
In the type-specimen which was obtained at Bentenjima, the colony is of a brick red colour and measures 6.5 cm. high and 9 cm. across in the terminal portion (Text-fig. 1). It consists of some short basal stems, each of which is 7.5 mm. in diameter and almost immediately breaks up into branches dichotomously divided and flattened especially in the distal part. The branches and branchlets are arranged in almost parallel planes and present anastomoses at irregular intervals. Distributed in two rows are polypes which are



Text-fig. 1. *Melitodes mutsu*,  
n. sp. ( $\times \frac{2}{3}$ )

<sup>1)</sup> A contribution from the Marine Biological Station, Asamushi, Aomori-Ken.

1 mm. high by 1.5 mm. wide. The spicules of calyx walls are quite similar to those found in *Melitodes densa* KÜKENTHAL. The polype spicules (Text-fig. 2, a) are warty spindles, about 0.2 mm. long and arranged in transverse rows, while the tentacular spicules (Text-fig. 2,



Text-fig. 2. Spicules of *Melitodes mutsu*, n. sp.  
a, Polype spicule. b, Tentacular spicule. c, Spicules of coenenchyme.  
d, Spicule of node. (a, c, d×300; b×350)

b) are very thick warty spindles with a median keel on the outer side and disposed in eight distally converged tentacular groups. There are fairly numerous spicules in the coenenchyme, which vary considerably in form but not in size (Text-fig. 2, c). They are thick warty spindles and measure 0.1—0.15 mm. in length. The above-mentioned three types of spicules are of a yellowish vermilion colour. The spicules found in the node are slender and spindle-shaped with both ends sharply pointed and are provided with minute projections at the middle (Text-fig. 2, d).

*Localities.* — Bentenjima, Ōmasaki; Takaisozaki, Sai.

*Remarks.* — *Melitodes mutus*, n. sp. is very closely allied to *Melitodes*

*densa* KÜKENTHAL. The characteristic by which the former may be distinguished from the latter exists in the features of the spicules contained in the nodes.

#### LITERATURE CITED.

- 1) KÜKENTHAL, W. Melitodidae: Beiträge zur Naturgeschichte Ostasiens, Japanische Gorgoniden Teil II.
- 2) —. Die Gorgonidenfamilie der Melitodidae Verr.; Zool. Anzeiger Bd. XXXIII.
- 3) —. System und Stammesgeschichte der Melitodae: Zool. Anzeiger Bd. XLVII.
- 4) —. Melitodidae: Wissenschaft. Ergebniss der Deutschen Tiefseeexpedition Valdivia Bd. XXIII 2<sup>1</sup> and 2<sup>2</sup>.