

Successive superconducting transitions in Ta₂S₂C studied by electrical resistivity and nonlinear ac magnetic susceptibility

Masatsugu Suzuki* and Itsuko S. Suzuki†

Department of Physics, State University of New York at Binghamton, Binghamton, New York 13902-6000, USA

Takashi Noji‡ and Yoji Koike§

Department of Applied Physics, Graduate School of Engineering, Tohoku University, Sendai 980-8579, Japan

Jürgen Walter¶

Department of Materials Science and Processing, Graduate School of Engineering, Osaka University, 2-1, Yamada-oka, Suita 565-0879, Japan

(Received 16 January 2007; published 31 May 2007)

Ta₂S₂C compound undergoes superconducting transitions at $T_{cl}=3.60\pm 0.02$ K and $T_{cu}=9.0\pm 0.2$ K. The nature of successive superconducting transitions has been studied from electrical resistivity and linear and nonlinear ac magnetic susceptibilities. The resistivity ρ at $H=0$ shows a local maximum near T_{cu} , a kinklike behavior around T_{cl} , and reduces to zero at below $T_0=2.1$ K. The $\ln T$ dependence of ρ is observed at $H=50$ kOe at low temperatures, which is due to a two-dimensional weak-localization effect. Below T_{cu} , a two-dimensional superconducting phase occurs in each TaC layer. The linear and nonlinear susceptibilities χ''_1 , χ'_3 , χ'_5 , and χ'_7 as well as the difference $\delta\chi (= \chi_{FC} - \chi_{ZFC})$ between the field-cooled (FC) and zero-field-cooled (ZFC) susceptibilities start to appear below 6.0 K, the onset temperature of irreversibility. A drastic growth of the in-plane superconducting coherence length below 6.0 K gives rise to a three-dimensional superconducting phase below T_{cl} through interplanar Josephson couplings between adjacent TaC layers. The oscillatory behavior of χ''_3 , χ''_5 , and χ''_7 below T_{cl} is related to the nonlinear behavior arising from the thermally activated flux flow.

DOI: [10.1103/PhysRevB.75.184536](https://doi.org/10.1103/PhysRevB.75.184536)

PACS number(s): 74.25.Fy, 74.25.Ha, 74.25.Dw

I. INTRODUCTION

Ta₂S₂C has a unique layered structure, where a sandwiched structure of C-Ta-S-vdW-S-Ta-C is periodically stacked along the c axis. A van der Waals (vdW) gap is between adjacent S layers.^{1,2} The structure of Ta₂S₂C can be viewed as a structural sum of TaC and TaS₂ layers. The structural part corresponding to the TaS₂ layer is identical to the atom disposition of either 1T-TaS₂ in the case of 3R-Ta₂S₂C or a hypothetical 2H_b-TaS₂ (MoS₂ type) in the case of 1T-Ta₂S₂C (see the schematic diagram of the structure of Ta₂S₂C elsewhere^{2,3}). The bulk TaC shows a superconductivity around 9 K,^{4,5} while the bulk 1T-TaS₂ shows an Anderson localization effect at low temperatures.⁶⁻⁸ Our interest lies in the electrical and magnetic properties of Ta₂S₂C which will be discussed in association with the quasi-two-dimensional (2D) character of the system.

In our previous paper,¹ we have undertaken an extensive study on the dc and ac magnetic susceptibilities of 3R-Ta₂S₂C. We have shown that this compound undergoes successive superconducting phase transitions at T_{cl} ($=3.60\pm 0.02$ K) and T_{cu} ($=9.0\pm 0.2$ K). Between T_{cu} and T_{cl} , the 2D superconducting phase mainly occurs in each TaC layer. Below T_{cl} , there occurs a three-dimensional (3D) superconducting phase through interplanar Josephson couplings between adjacent TaC layers. We have also shown that the localized magnetic moments of conduction electrons associated with the Anderson localization appear probably in the 1T-TaS₂ layers.

In the present paper, we examine (i) the nature of the successive superconducting phase transitions at T_{cu} and T_{cl} ,

(ii) the 2D weak-localization effect in a strong magnetic field, and (iii) the H - T phase diagram. To this end, we measure the electrical resistivity ρ of Ta₂S₂C in the absence and the presence of an external dc magnetic field H . We also measure the linear and nonlinear ac magnetic susceptibilities (χ'_{2n+1} and χ''_{2n+1} with $n=0,1,2,3$) in the absence of H . When the magnetic behavior of a system is completely reversible and the electric-field (E) vs current-density (J) relationship is linear, there will be no higher-order harmonics associated with the ac magnetic susceptibility. However, when the E - J relationship is nonlinear, there will be a nonlinear M - H response, leading to the generation of higher-order harmonics. Such a nonlinearity of the system arises from the presence of magnetic-flux pinning.

We show that the resistivity strongly depends on the temperature T and H . The resistivity ρ at $H=0$ shows a local maximum near T_{cu} and a kinklike behavior around T_{cl} . It reduces to zero below $T_0=2.1$ K. A 2D superconducting phase occurs in each TaC layer below T_{cu} . We show that the irreversible effect of magnetization occurs below 6.0 K from the linear and nonlinear susceptibilities χ'_1 , χ'_3 , χ'_5 , and χ'_7 as well as the difference $\delta\chi (= \chi_{FC} - \chi_{ZFC})$, where χ_{FC} and χ_{ZFC} are field-cooled (FC) and zero-field-cooled (ZFC) dc magnetic susceptibilities. The drastic growth of the in-plane superconducting coherence length below 6.0 K gives rise to a 3D superconducting phase below T_{cl} through interplanar Josephson couplings between adjacent TaC layers. The H - T phase diagram is also discussed. We show that the oscillatory behavior of χ''_3 , χ''_5 , and χ''_7 below T_{cl} is related to the nonlinear behavior arising from the thermally activated flux flow.

We show that the $\ln T$ dependence of ρ at $H=50$ kOe at low temperatures is due to the 2D weak-localization effect. Our results from the electrical resistivity and nonlinear ac magnetic susceptibility will be compared with those from dc magnetic susceptibility and linear ac magnetic susceptibility which have already been reported in our previous paper.¹

II. EXPERIMENTAL PROCEDURE

Powdered samples of $\text{Ta}_2\text{S}_2\text{C}$ were prepared by Wally and Ueki.^{9–11} The detail of the synthesis and structure is described in the previous paper.¹ X-ray powder-diffraction pattern shows that the $\text{Ta}_2\text{S}_2\text{C}$ sample consists of a 3R phase as a majority phase and a 1T phase as a minority phase. The electrical resistivity was measured using PPMS (Quantum Design) in the temperature range ($0.5 \leq T \leq 298$ K) and the magnetic field ($0 \leq H \leq 50$ kOe). The sample has a form of rectangular-prism pellet ($3.5 \times 0.8 \times 6.5$ mm³) prepared from polycrystalline powdered $\text{Ta}_2\text{S}_2\text{C}$ by pressing it. The four-probe method was used for the measurement. The voltage probes and current probes were attached to the surface of the sample by using silver paste. The dc magnetic susceptibility was measured using superconducting quantum interference device (SQUID) magnetometer (Quantum Design, MPMS XL-5). The detail of the cooling protocol process for the measurement of the ZFC and FC susceptibilities is described in the previous paper.¹

The nonlinear ac magnetic susceptibility of $\text{Ta}_2\text{S}_2\text{C}$ was measured by using SQUID magnetometer (Quantum Design MPMS XL-5) with ac susceptibility option. When the ac magnetic field [$=h \cos(\omega t)$] at angular frequency ω ($=2\pi f$) is applied, the ac magnetization $M(\omega, t)$ induced in the system is expressed by a sum of Fourier components with odd angular frequency $(2n+1)\omega$ ($n=0, 1, 2, 3, \dots$),¹²

$$M(\omega, t) = \sum_{n=0} \{ \Theta'_{2n+1} \cos[(2n+1)\omega t] + \Theta''_{2n+1} \sin[(2n+1)\omega t] \}, \quad (1)$$

where

$$\Theta'_1 = \chi'_1 h + \frac{3}{4} \chi'_3 h^3 + \frac{5}{8} \chi'_5 h^5 + \frac{35}{64} \chi'_7 h^7 + \frac{63}{128} \chi'_9 h^9 + \dots \quad (2)$$

and

$$\Theta'_3 = \frac{1}{4} \chi'_3 h^3 + \frac{5}{16} \chi'_5 h^5 + \frac{21}{64} \chi'_7 h^7 + \frac{21}{64} \chi'_9 h^9 + \dots, \quad (3)$$

and similarly for the imaginary part Θ''_{2n+1} ,

$$\Theta''_1 = \chi''_1 h + \frac{3}{4} \chi''_3 h^3 + \frac{5}{8} \chi''_5 h^5 + \frac{35}{64} \chi''_7 h^7 + \frac{63}{128} \chi''_9 h^9 + \dots \quad (4)$$

and

$$\begin{aligned} & \Theta''_{2n+1}(h, \chi''_1, \chi''_3, \chi''_5, \dots) \\ &= (-1)^n \Theta'_{2n+1}(h, \chi'_1 \rightarrow \chi''_1, \chi'_3 \rightarrow \chi''_3, \chi'_5 \rightarrow \chi''_5, \dots). \end{aligned} \quad (5)$$

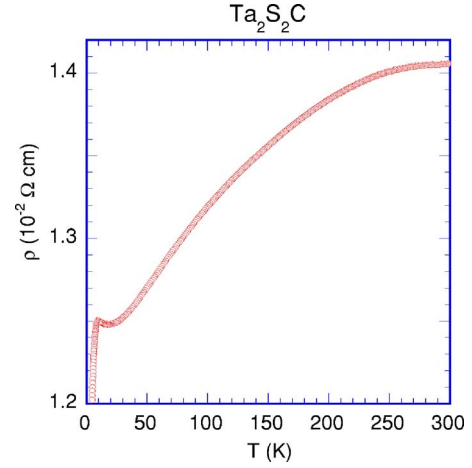


FIG. 1. (Color online) T dependence of the resistivity ρ at $H=0$ for $\text{Ta}_2\text{S}_2\text{C}$.

The linear and nonlinear ac magnetic susceptibilities were measured in the following way. Before setting up a sample at 298 K, a remnant magnetic field in a superconducting magnet was reduced to less than 3 mOe using an ultralow-field capability option. The system was cooled from 298 to 2.0 K at zero magnetic field (ZFC protocol). In our ac SQUID system, only the real part Θ'_1 and the imaginary part Θ''_1 of the ac magnetization were simultaneously measured as a function of the amplitude of ac magnetic field h ($0.05 \leq h \leq 4$ Oe) at $H=0$ at each T ($2.0 \leq T \leq 12.0$ K). The frequency of the ac magnetic field was kept at $f=0.1$ Hz. After each h -scan measurement at fixed T , the temperature was increased by $\Delta T=0.1$ K and the h -scan measurements were repeated. The linear and nonlinear susceptibilities χ'_{2n+1} and χ''_{2n+1} with $n=0, 1, 2$, and 3 are determined from the least-squares fits of the data to Eq. (2) for Θ'_1 and to Eq. (4) for Θ''_1 . Note that this method is suitable for the nonlinear susceptibility for spin glass systems at low frequencies ($f=0.01$ – 0.1 Hz), where the nonlinear susceptibility may diverge at a spin freezing temperature in the absence of a dc magnetic field.

III. RESULT

A. Electrical resistivity

We have measured the electrical resistivity as a function of T and H . Figure 1 shows the T dependence of the electrical resistivity ρ at $H=0$. In Figs. 2 and 3, for clarity, we also show the T dependence of ρ at various magnetic field H for $0 \leq H \leq 50$ kOe, depending on the ranges of T and the values of ρ . The resistivity ρ at $H=0$ decreases with decreasing T from 300 K, showing a metallic behavior at high temperatures: As shown in Fig. 2, ρ at $H=0$ shows a local minimum at T_{min} ($=19$ K) and starts to increase with decreasing T , showing a bit of evidence for the possible localization effect. The resistivity ρ at $H=0$ exhibits a local maximum at T_{max} (≈ 9.6 K) and again starts to decrease with decreasing T . This local-maximum temperature T_{max} is close to T_{cu} . As shown in Figs. 3(a) and 3(b), ρ at $H=0$ exhibits a kinklike

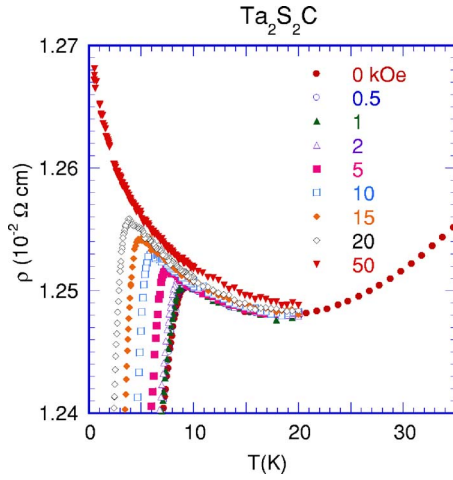


FIG. 2. (Color online) T dependence of ρ at fixed H ($=0, 0.5, 1, 2, 5, 10, 15, 20,$ and 50 kOe).

behavior at T_{kink} (≈ 3.6 K). This kink temperature corresponds to T_{cl} . The resistivity ρ drastically decreases with decreasing T below T_{kink} and reduces to zero below $T_0 = 2.1$ K, suggesting that the superconductivity occurs at low T over the whole system. For convenience, we also define the characteristic temperature $T_{1/2}$ at which ρ is equal to half of the normal resistivity at T_{max} . As shown in Figs. 2 and 3,

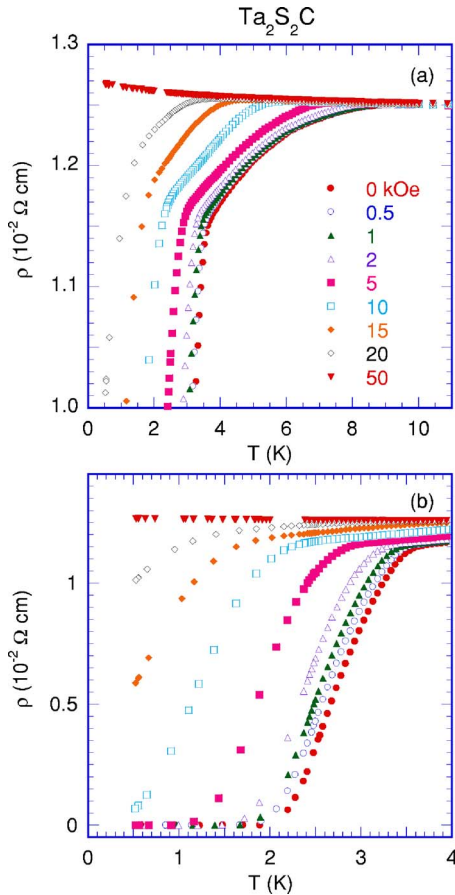


FIG. 3. (Color online) [(a) and (b)] T dependence of ρ at low temperatures for various H .

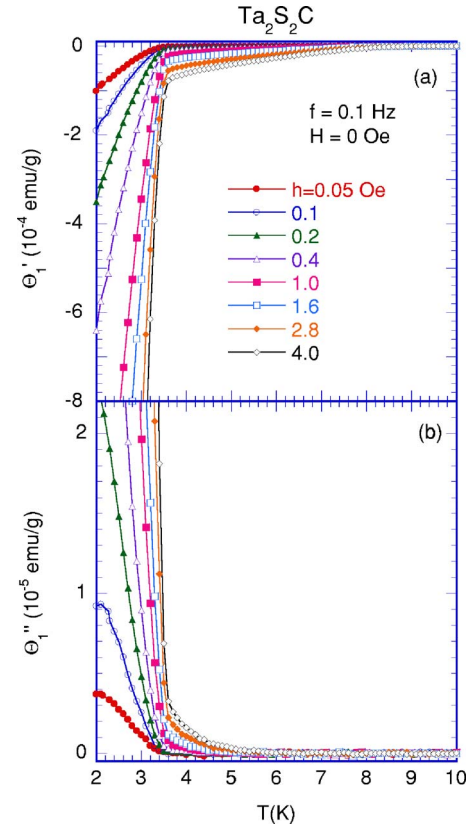


FIG. 4. (Color online) (a) Θ'_1 vs T and (b) Θ''_1 vs T at various amplitudes of ac magnetic field, $h=0.05-4$ Oe. $f=0.1$ Hz. The solid lines are guides to the eyes.

the curve of ρ vs T is strongly dependent on H . The characteristic temperatures T_{max} , T_{kink} , $T_{1/2}$, and T_0 decrease with increasing H . The H - T diagram of these temperatures will be described in Sec. III D and is compared with that of $T_{cu}(H)$ and $T_{cl}(H)$.¹ In Sec. IV A, we will show that ρ at $H = 50$ kOe is proportional to $\ln T$ at low temperatures. This behavior will be discussed in association with a 2D weak-localization effect.

B. Linear and nonlinear ac magnetic susceptibilities

We have determined the T dependence of the linear and nonlinear ac magnetic susceptibilities of $\text{Ta}_2\text{S}_2\text{C}$. Figure 4 shows the T dependence of Θ'_1 and Θ''_1 at various ac magnetic fields ($0.05 \leq h \leq 4$ Oe) in the absence of a dc magnetic field, where $f=0.1$ Hz. It is experimentally confirmed that both Θ'_1 and Θ''_1 are well described by a series expansion of only odd power of h [see Eqs. (2) and (4)]. The T dependence of the real parts χ'_1 , χ'_3 , χ'_5 , and χ'_7 and the imaginary parts χ''_1 , χ''_3 , χ''_5 , and χ''_7 are shown in Figs. 5 and 6, respectively. The results are summarized as follows. (i) χ'_1 is negative below T_{cu} . It shows a kinklike behavior at T_{cl} and reduces to zero at T_{cu} . (ii) Both χ'_3 and χ'_7 are positive at low temperatures. They show a kinklike behavior at T_{cl} and reduce to zero around 6.0 K. Note that the positive sign of χ'_3 is observed below T_c in melt grown $\text{YBa}_2\text{Cu}_3\text{O}_{7-\delta}$ by

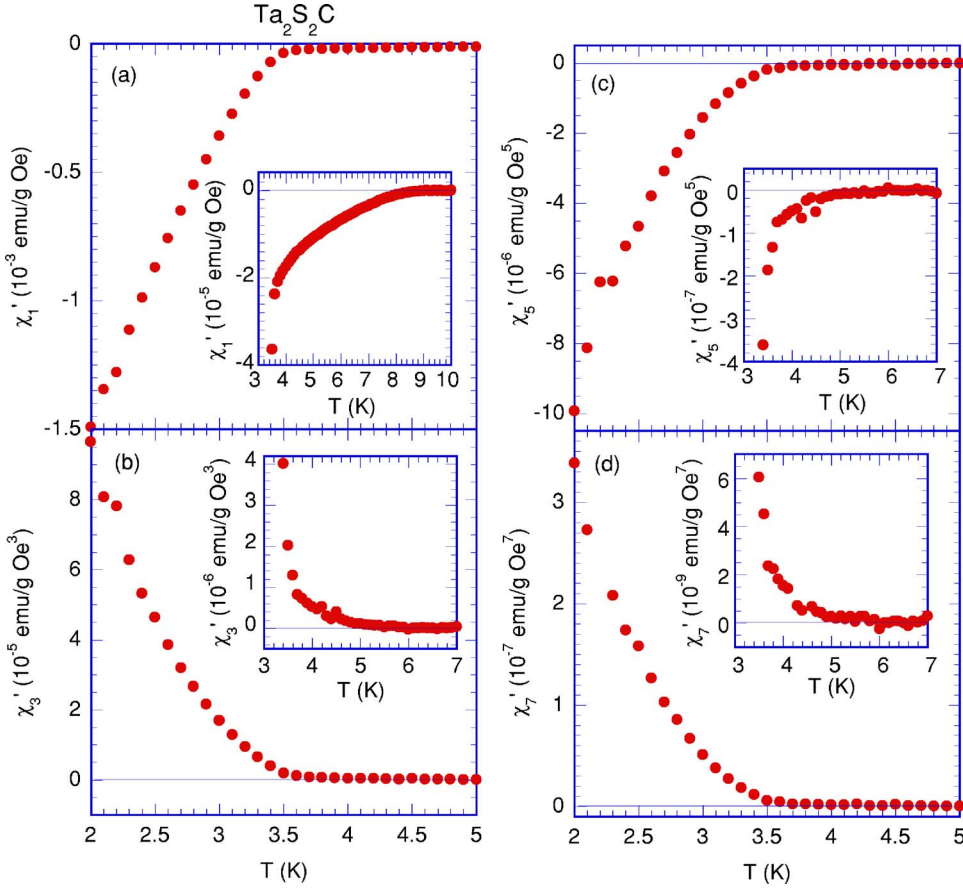


FIG. 5. (Color online) T dependence of linear and nonlinear susceptibilities (a) χ'_1 , (b) χ''_3 , (c) χ'_5 , and (d) χ'_7 . $f=0.1$ Hz. These are determined from the least-squares fit of the data Θ'_1 vs h for $0.05 \leq h \leq 4.0$ Oe at each T to Eq. (2). In the insets, we show the detail of the T dependence of χ'_1 , χ'_3 , χ'_5 , and χ'_7 .

Polichetti *et al.*¹³ ($f=10.7$ Hz, $H=0$, $h=4$ Oe). (iii) χ'_5 is negative at low temperatures. It shows a kinklike behavior at T_{cl} and reduces to zero around 6.0 K. (iv) χ'_1 is positive at low temperatures. It shows a kinklike behavior at T_{cl} and reduces to zero around 6.0 K. Note that the T dependence of χ'_1 is similar to that of χ'_3 . (v) χ'_3 is negative at low temperatures. It reduces to zero at 3.1 K, showing a positive peak at 3.3 K, and reduces to zero around T_{cl} . Similar oscillatory behavior in χ'_3 vs T below the transition temperature T_c has been reported by Ishida *et al.*¹⁴ in a high- T_c superconductor $(\text{Sr}_{0.7}\text{Ca}_{0.3})_{0.95}\text{CuO}_{2-x}$. (vi) χ''_5 is positive at low temperatures. It reduces to zero at 3.2 K, showing a negative local minimum at 3.4 K, and reduces to zero around 3.6 K. (vii) χ''_7 is negative at low temperatures. It crosses the zero line around 3.2 K, showing a positive peak at 3.5 K, and reduces to zero around T_{cl} . The physical meaning of the T dependence of χ'_{2n+1} and χ''_{2n+1} ($n=0, 1, 2, 3$) will be discussed in Secs. IV B and IV C in association with the onset of irreversibility in magnetization below 6.0 K and the presence of thermally activated flux flow below T_{cl} .

C. χ_{ZFC} and χ_{FC}

Our results on the ZFC susceptibility χ_{ZFC} and the FC susceptibility χ_{FC} have been reported in detail in our previous paper.¹ These results are consistent with the present results derived from the measurement of ρ vs T (Sec. III A). Here, we summarize our results using two figures which are not published in the previous paper.¹ The method of the mea-

surements is the same as that in the previous paper.¹ Figure 7(a) shows the T dependence of χ_{ZFC} , χ_{FC} , and the difference $\delta\chi$ at $H=10$ Oe, where $\delta\chi = \chi_{FC} - \chi_{ZFC}$. Figure 7(b) shows the T dependence of $\delta\chi$ at $H=1$ Oe. The difference starts to appear below 6.0 K between T_{cl} and T_{cu} . This temperature is defined as an onset temperature of irreversibility in magnetization at $H=1$ Oe.

Figure 8(a) shows the T dependence of χ_{FC} for $1 \leq H \leq 150$ Oe. Figure 8(b) shows the T dependence of χ_{ZFC} and χ_{FC} for $H \geq 2$ kOe. In Figs. 7(a) and 8(a), the susceptibility χ_{ZFC} (χ_{FC}) exhibits a kink at $T_{cl}(H)$, where $d\chi_{ZFC}/dT$ ($d\chi_{FC}/dT$) undergoes a discontinuous jump. The deviation of χ_{ZFC} from χ_{FC} is clearly seen below $T_{cl}(H)$, indicating that the extra magnetic flux is trapped during the FC process (see more detail of $\delta\chi$ vs T at various H in our previous paper¹). As shown in Fig. 8(b), there is a drastic decrease in the diamagnetic contribution in χ_{ZFC} with increasing T below $T_{cl}(H)$. Nevertheless, a diamagnetic contribution in χ_{ZFC} still remains above $T_{cl}(H)$, increases with further increasing T , and becomes zero at an upper critical temperature $T_{cu}(H)$. The sign of χ_{ZFC} changes from negative to positive around 9 K with increasing T .¹ At $H=5$ kOe, χ_{ZFC} is positive at least between 1.9 and 6 K, showing a broad peak at 2.65 K. At $H=10$ kOe, χ_{ZFC} decreases with increasing T , showing a Curie-like behavior.¹ We note that the susceptibility at low T for 1T-TaS₂ layer shows a Curie-like behavior due to the localized magnetic moments of conduction electrons related to the Anderson localization effect.¹⁵

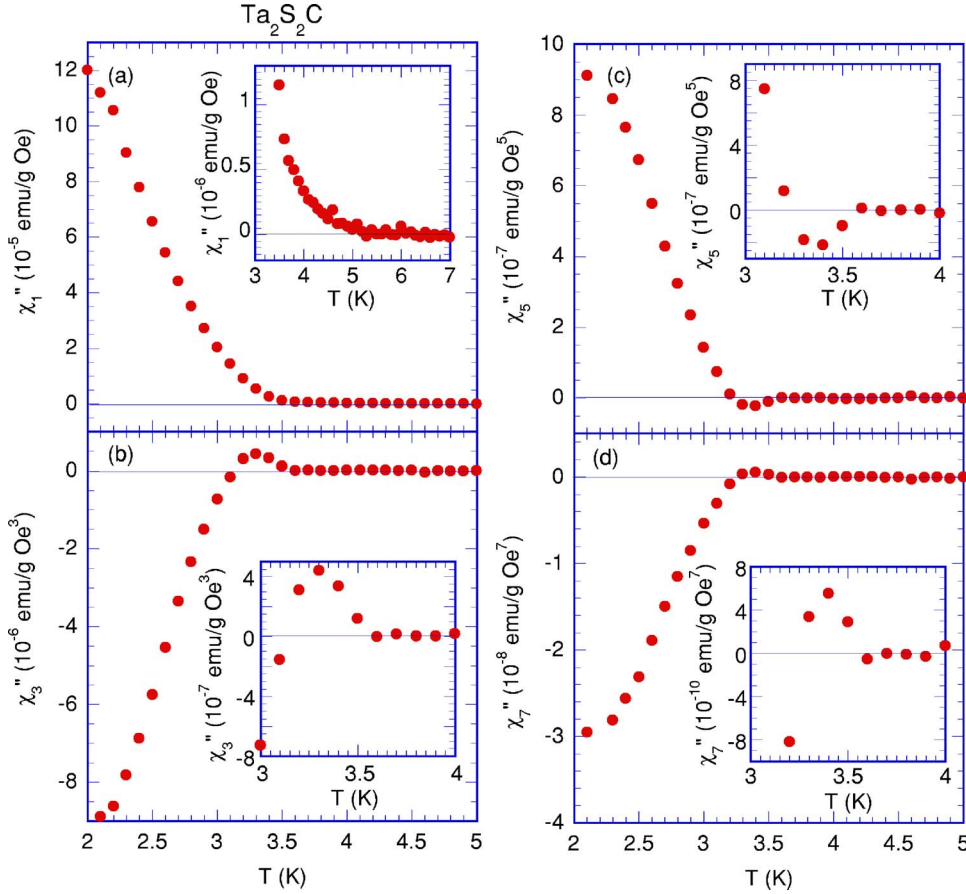


FIG. 6. (Color online) T -dependence of linear and nonlinear susceptibilities (a) χ_1'' , (b) χ_3'' , (c) χ_5'' , and (d) χ_7'' . $f=0.1$ Hz. These are determined from the least-squares fit of the data Θ_1' vs h for $0.05 \leq h \leq 4.0$ Oe at each T to Eq. (4). In the insets, we show the detail of the T dependence of χ_1'' , χ_3'' , χ_5'' , and χ_7'' around T_{cl} .

D. H - T phase diagram

Figure 9 shows the H - T phase diagram. Here, $T_{cl}(H)$ is determined from the data of Θ_1'/h vs T and Θ_1''/h vs T at $f=1$ Hz and $h=0.5$ Oe, and $T_{cu}(H)$ is determined from the data of χ_{ZFC} vs T (see the previous paper¹ in detail). The negative sign of χ_{ZFC} and χ_{FC} and Θ_1'/h below $T_{cu}(H)$ indicates that the system is at least partially in a superconducting state. The dispersion Θ_1'/h shows a kinklike behavior at $T_{cl}(H)$. Four characteristic temperatures are determined from the resistivity measurement: (i) T_0 where ρ reduces to zero (the real Meissner state), (ii) $T_{1/2}$ where ρ is equal to one-half of the normal resistivity (this is conventionally used as the definition of the superconducting transition temperature in the resistivity measurement of high- T_c superconductors^{16–18}), (iii) T_{kink} where ρ shows a kinklike behavior (a crossover behavior occurs from the 2D superconducting phase to the 3D superconducting phase), and (iv) T_{max} where ρ exhibits a local maximum (a part of TaC clusters become superconductivity). Note that this definition of T_{max} is also used as the onset temperature of superconductivity for the electron-doped high- T_c superconductors (granular superconductors).^{16–18} As shown in Fig. 9, the line $T_{kink}(H)$ almost coincides with the line $T_{cl}(H)$. The line $T_{max}(H)$ is near the line $T_{cu}(H)$ at low H but the difference between them becomes larger as H increases. This may be due to the superconducting fluctuations sensitively observed by the resistivity measurements. The lines $T_0(H)$ and $T_{1/2}(H)$ are a little lower than the line $T_{cl}(H)$ at the same H by 1.2–1.5 K. This

difference may be reduced when the structural coupling between fine particles in the pelletized sample becomes strong during the pressing process. It seems that the lines $T_{cu}(H)$ and $T_{kink}(H)$ merge into a point located at $H_m=10$ kOe and $T_m=2$ K in the H - T plane. In the previous paper,¹ we assume that the line $T_{cu}(H)$ corresponds to the upper critical fields $H_{c2}^{(u)}(T)$. The line $H_{c2}^{(u)}(T)$ can be well described by

$$H_{c2}^{(u)}(T) = H_{c2}^{(u)}(T=0) \left(1 - \frac{T}{T_{cu}}\right)^\alpha, \quad (6)$$

with $\alpha=1.23 \pm 0.07$, $T_{cu}=9.0 \pm 0.2$ K, and $H_{c2}^{(u)}(T=0)=14.5 \pm 0.5$ kOe.¹

We note that the superconducting phase between T_{cu} and T_{cl} in $\text{Ta}_2\text{S}_2\text{C}$ is similar to that observed in bulk TaC,^{4,5} TaC nanoparticles based on carbon nanotube,¹⁹ TaC encapsulated into the inner core of carbon nanotubes,²⁰ and Ta-metal graphite based on natural graphite.²¹

(i) Bulk TaC with a rocksalt structure shows type-II superconductivity where $T_c=10.2$ K, the lower critical field $H_{c1}=220$ Oe, and the upper critical field $H_{c2}=4.6$ kOe.⁵ (ii) In TaC nanoparticles (carbon nanotube) synthesized at 1000–1100 °C, the size of TaC nanoparticles is on the order of 270–340 Å. This compound shows superconductivity with a critical temperature $T_c (=10.5$ K) and critical field $H_{c2} (=16.3$ kOe).¹⁹ (iii) The ZFC and FC susceptibility measurements on TaC crystal encapsulated into the inner core of carbon nanotubes²⁰ reveal that this system exhibits a superconductivity below 10 K. The resistivity ρ shows a metallic

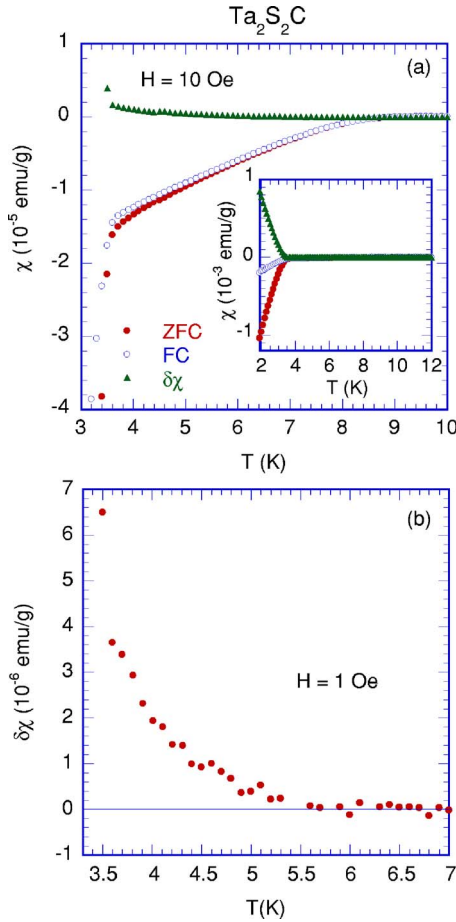


FIG. 7. (Color online) (a) T dependence of the zero-field-cooled susceptibility χ_{ZFC} , the field-cooled susceptibility χ_{FC} , and the difference $\delta\chi$ ($=\chi_{FC}-\chi_{ZFC}$) for $H=10$ Oe. (b) Detail of the T dependence of $\delta\chi$ near 6.0 K. $H=1$ Oe.

behavior for $T > 60$ K. The T dependence of ρ for $13 < T < 60$ K is well described by a 3D variable range hopping model; $\ln(\rho/T^{1/2})$ is proportional to $1/T^{1/4}$. (iv) In Ta-metal graphite, Ta-metal layer is sandwiched between adjacent graphene sheets, forming a periodic stacking sequence along the c axis.²¹ This compound shows the superconductivity below $T_c=10$ K at $H=0$. The critical field H_{c2} increases with increasing T for $H_{c2} \leq 0.3$ kOe, showing a reentrant phase. By this phase, one means that at fixed T close to 10 K the system changes from the normal (N) phase to the superconducting (S) phase and from the S phase to the N phase with increasing H . The critical field H_{c2} increases with decreasing T for $H_{c2} > 0.5$ kOe and reaches 20 kOe at 6 K. Thus, it can be concluded from these results that the superconductivity below T_{cu} in Ta₂S₂C occurs in each TaC layer.

IV. DISCUSSION

A. 2D weak-localization effect

It is interesting to compare our results of ρ vs T at $H=50$ kOe with that at $H=0$ and 50 kOe for bulk 1T-TaS₂.⁷ The overall behavior of ρ vs T at $H=50$ kOe is qualitatively similar to that of bulk 1T-TaS₂ at least below the charge-

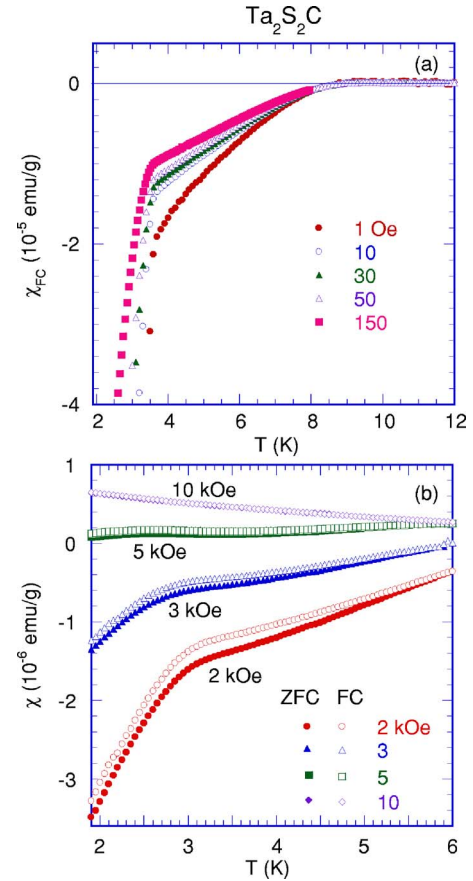


FIG. 8. (Color online) (a) T dependence of χ_{FC} at $H=1, 10, 30, 50,$ and 150 Oe. (b) T dependence of χ_{FC} and χ_{ZFC} at $H=2, 3, 5,$ and 10 kOe.

density wave commensurate transition temperature T_d (≈ 200 K).⁷ The resistivity ρ at $H=0$ for bulk 1T-TaS₂ shows a local minimum around 50 K and increases with further decreasing T . The value of ρ , which is between 30 and 40 m Ω cm, is relatively larger than that (≈ 12.5 m Ω cm) for ρ at $H=50$ Oe for Ta₂S₂C (see Fig. 2). Note that our result of ρ vs T is rather different from that of Ta₂S₂C reported by Ziebarth *et al.*²² using a pressed and sintered sample. They have observed that ρ increases with increasing T for $4.2 \leq T \leq 300$ K ($\rho \approx 0.8$ m Ω cm at 4.2 K and 2.2 m Ω cm at 300 K), showing a metallic behavior. No discontinuous change in ρ has been seen below 300 K.

It seems that the local-minimum temperature $T_{min}(H)$ for ρ vs T is independent of H for $0 \leq H \leq 50$ kOe (see Fig. 2). The curve of $\rho(H, T)$ vs T for $0 \leq H \leq 20$ kOe deviates from that at $H=50$ kOe at low temperatures below $T_{max}(H)$. No local maximum in ρ vs T is observed at $H=50$ kOe: ρ continues to increase with decreasing T at least down to $T=0.5$ K. Figure 10 shows the plot of ρ at $H=50$ kOe as a function of a logarithmic scale of T for $0.7 \leq T \leq 12$ K. We find that ρ is well described by

$$\rho = \rho_0 - \rho_1 \ln T, \quad (7)$$

with $\rho_0 = 12.66$ m Ω cm and $\rho_1 = 5.99 \times 10^{-2}$ m Ω cm. Note that the value of ρ_1 is rather different from that predicted

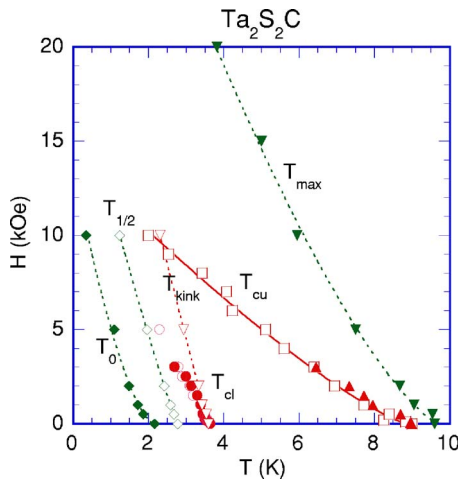


FIG. 9. (Color online) H - T phase diagram. The characteristic temperatures (T_0 , $T_{1/2}$, T_{kink} , T_{max}) are defined from the resistivity measurement: T_0 where ρ reduces to zero, $T_{1/2}$ where ρ is equal to one-half of the normal resistivity, T_{kink} where ρ shows a kinklike behavior, and T_{max} where ρ exhibits a local maximum. The critical temperatures (T_{cu} and T_{cl}) are defined from the dc and ac magnetic susceptibilities (Ref. 1). T_{cl} is determined from the measurements of Θ'_1/h ($f=1$ Hz and $h=0.5$ Oe) vs T and Θ'_1/h ($f=1$ Hz and $h=0.5$ Oe) vs T . T_{cu} is determined from the measurements of Θ'_1/h ($f=1$ Hz and $h=0.5$ Oe) vs T and χ_{ZFC} vs T . The solid line is least-squares fitting curve for the data of $T_{cu}(H)$ to Eq. (6). The dotted lines are guide to the eyes.

from the 2D weak localization, partly because our system is a powdered sample. No evidence for the negative magnetoresistance is observed in Ta_2S_2C at temperatures above 0.5 K. However, there is some possibility that the negative magnetoresistance may be observed at much lower temperatures. In fact, for 1T-Ta₂, the negative resistance is observed only below 100 mK, while the positive magnetoresistance is observed above $T=200$ mK.⁸ Nevertheless, the above result suggests that the mutual interaction effect between electrons in a 2D weakly localized state¹⁵ occurs in Ta_2S_2C at $H=50$ kOe. Similar behavior has been reported in electron-

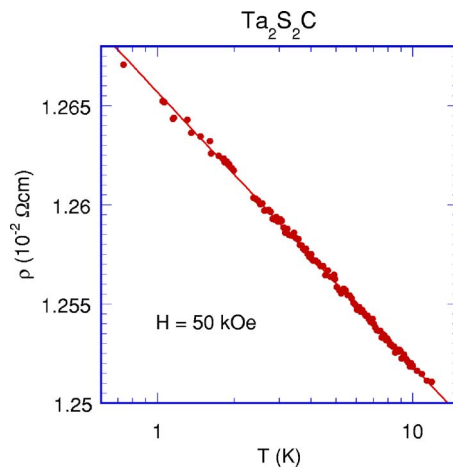


FIG. 10. (Color online) T dependence of resistivity at $H=50$ kOe for $0.7 \leq T \leq 12$ K. The solid line denotes the least-squares fitting curve to Eq. (7).

doped high- T_c superconductor $Nd_{2-x}Ce_xCuO_y$ with $x=0.15$.²³ The superconducting state is destroyed above around $H=100$ kOe even at 1.3 K. The normal resistivity, which is obtained by extrapolating the high-field value to zero-field value, increases with decreasing T , showing a $\ln T$ dependence.

Here, we show that the 2D weak localization observed in Ta_2S_2C is closely related to the Anderson localization effect in bulk 1T-TaS₂. For bulk 1T-TaS₂, the resistivity ρ below 2 K diverges according to the relation

$$\rho = \rho_2 + \rho_3 \exp[(T_a/T)^{1/\zeta}], \quad (8)$$

where $\zeta (=d+1)$ is an exponent, d is the dimension of the system, ρ_2 and ρ_3 are constant resistivities, and T_a is a characteristic temperature. The exponent ζ is equal to 3, which has been first reported by DiSalvo and Graebner.⁶ The value of $\zeta=3$ is consistent with the 2D variable range hopping conduction. Furukawa *et al.*⁸ have measured the electrical resistivity of bulk 1T-TaS₂ prepared in several ways as a function of T and H . The T dependence of ρ at $H=0$ for $40 \text{ mK} \leq T \leq 4 \text{ K}$ is well described by Eq. (8) with $\zeta=3.0$, $T_a=1.08 \pm 0.19 \text{ K}$, $\rho_3=9.72 \pm 1.84 \text{ m}\Omega \text{ cm}$, and $\rho_2=2.66 \pm 3.99 \text{ m}\Omega \text{ cm}$, indicating that the 2D variable range hopping occurs at $H=0$. In contrast, the T dependence of ρ at $H=50$ kOe for $40 \text{ mK} \leq T \leq 4 \text{ K}$ is well described by Eq. (7) with $\rho_1=11.58 \pm 0.23 \text{ m}\Omega \text{ cm}$ and $\rho_0=37.49 \pm 0.40 \text{ m}\Omega \text{ cm}$. This result indicates that the 2D weak-localization effect occurs in bulk 1T-TaS₂ at $H=50$ kOe. When H is applied, the energy difference between the Fermi level and the mobility edge of electrons with spins parallel to the field direction becomes small, leading to a marked increase of the hopping probability of the electrons from one site to another site and to a marked decrease in the resistivity.²⁴

No 2D variable range hopping conduction ($\zeta=3$) occurs at $H=0$ in Ta_2S_2C since the system shows superconductivity. The $\ln T$ dependence of ρ observed at $H=50$ kOe in Ta_2S_2C is due to the 2D weak-localization effect in the 1T-TaS₂ layers. However, the normal state of the TaC layers is also expected to contribute to the 2D electronic conduction. Therefore, it is concluded that the $\ln T$ dependence of ρ is due to the 2D weak-localization effect of both 1T-TaS₂ layers and TaC layers.

B. Onset of irreversibility

In our previous paper,¹ we have shown that the difference $\delta\chi (= \chi_{FC} - \chi_{ZFC})$ shows a kink at $T_{cl}=3.60$ K. However, it does not reduce to zero at $T=T_{cl}$ but exhibits a broad tail above T_{cl} . In Fig. 7(b), we show that $\delta\chi$ at $H=1$ Oe reduces to zero around 6.0 K. It is assumed that the onset temperature of irreversibility T_{irr} is equal to 6.0 K. Above this temperature, χ_{ZFC} is exactly equal to χ_{FC} . The linear susceptibility χ'_1 shows a kink at T_{cl} . It reduces to zero at T_{cu} . This susceptibility is a measure of the ac flux penetration (ac magnetic-field screening) rather than the irreversibility. We find that χ'_1 , χ'_3 , $(-\chi'_5)$, and χ'_7 are positive at low temperatures. They decrease with increasing T and reduce to zero around 6.0 K. This implies that the onset temperature for χ'_1 , χ'_3 , $(-\chi'_5)$, and χ'_7 is the same as that for $\delta\chi$. Our results are

consistent with the prediction from the Bean critical state model²⁵ that $\chi_1''=0$ and $\chi_3'=0$ in the temperature region where each penetrating quantum flux moves reversibly with the change of small ac field ($H=0$). When the magnetic behavior of the system is reversible and the E - J relationship is linear, there will be no higher-order harmonics. However, when the E - J relationship is nonlinear, there will be a nonlinear, M - H response and the generation of higher-order harmonics. When the magnetic behavior is irreversible, it follows that the E - J relationship must be nonlinear. The in-plane superconducting coherence length starts to grow below 6.0 K and drastically increases with decreasing T as T approaches T_{cl} . Such a drastic growth of the in-plane coherence length ξ gives rise to a 3D superconducting phase below T_{cl} through interplanar Josephson couplings (J'_{inter}) between adjacent TaC layers. The effective interplanar interaction estimated as $J'_{inter}(\xi/a_0)^2$ is on the order of $k_B T$ at $T=T_{cl}$, where a_0 is the in-plane lattice constant of the TaC layer.

C. Thermally activated flux flow below T_{cl}

As is described in Sec. III B, the nonlinear susceptibilities χ_3'' , $(-\chi_5'')$, and χ_7'' have a local positive maximum at 3.4 K and a negative local minimum at 3.4 K just below T_{cl} . Such an oscillatory behavior of χ_3'' , $(-\chi_5'')$, and χ_7'' below T_{cl} is related to the nonlinear behavior arising from the thermally activated flux flow. Below T_{cl} , it is assumed that the resistivity $\rho(B, J)$, which depends on the current density J and the local magnetic field B , is formed of the parallel connection between the flux creep (ρ_{cr}) and flux flow (ρ_{ff}) resistivities (Gioacchino *et al.*²⁶). When $JU_p(T)/J_c(T)k_B T \ll 1$, the ratio E/J is independent of J , so that the resistivity ρ_{cr} describes a regime with Ohmic behavior, where $J_c(T)$ is the critical current density at T and $U_p(T)$ is the activation energy for flux jumps. When J is close to $J_c(T)$ and $U_p(T)/k_B T \gg 1$, the resistivity $\rho_{cr}(J)$ is dependent on J . This describes a non-Ohmic regime where a flux creep occurs. In a linear E - J characteristic, higher-order harmonics should be absent. However, the magnetic-field dependence of the two resistivities ρ_{cr} and ρ_{ff} can induce even in the presence of only ac magnetic field due to the nonlinear behavior of the system. In this case, higher harmonic components are present in the ac magnetic susceptibility. Gioacchino *et al.*²⁶ have made numerical calculations on the T dependence of χ_3' and χ_3'' near T_c for high- T_c superconductors, where $U_p(T)$ and $J_c(T)$ are different for different pinning models. The imaginary part at low frequencies χ_3'' shows an oscillatory behavior; it displays a positive value on approaching T_c from the low- T side and a positive value at lower temperatures. Thus, the oscillatory behavior of χ_3'' , $(-\chi_5'')$, and χ_7'' below T_{cl} in Ta₂S₂C arises from the nonlinear E - J relationship through the thermally activated flux flow.

D. T_{cl} and T_{cu}

We discuss the relation between T_{cu} and T_{cl} in terms of a model proposed by Jardim *et al.*²⁷ for the granular superconductor Sm_{2-x}Ce_xCuO_{4-y}. For simplicity, we assume that our system is a randomly coupled 3D system, where the super-

conducting grains are all of the same sizes, distributed on a diluted simple cubic network of lattice parameter a . A fraction p of the sites of the network is occupied by grains, which are Josephson coupled. With $p > p_c$ (p_c is a percolation threshold), the Josephson junctions form an infinite connected cluster. The Josephson coupling energy at T is given by²⁷

$$E_J(T) = \frac{23.153}{2\pi} k_B T_{cu} (1 - T/T_{cu}) \frac{R_c}{R_J}, \quad (9)$$

where $R_c = \hbar/e^2 = 4.11386$ k Ω and R_J is the resistance in the normal state of the junction. Here, we assume that the superconducting phase transition at T_{cl} is that of the 3D XY system; $k_B T_{cl} = 2.201 E_J(T_{cl})$. Then, the ratio T_{cl}/T_{cu} is derived as²⁷

$$\frac{T_{cl}}{T_{cu}} = \frac{1}{1 + 0.123(R_J/R_c)}. \quad (10)$$

The substitution of $T_{cu} = 9.0$ K and $T_{cl} = 3.60$ K in Ta₂S₂C into Eq. (10) leads to $R_J = 49.94$ k Ω . For the percolation model described above, the resistivity in the normal phase is expressed by²⁷

$$\rho = R_J a \left(\frac{p - p_c}{1 - p_c} \right)^{-t}, \quad (11)$$

where p_c is equal to 0.31 for the cubic lattice and t (≈ 1.9) is the 3D conductivity exponent. When $\rho = 12.5$ m Ω cm at 20 K in Ta₂S₂C, the lattice constant a is estimated as $a = 21.70$ Å for $p = 0.95$, 18.59 Å at $p = 0.9$, 13.06 Å at $p = 0.80$, 8.47 Å at $p = 0.70$, and 4.82 Å at $p = 0.60$. The lattice constant a at $p = 0.702$ is equal to the separation distance between adjacent TaC layers (8.537 Å) in Ta₂S₂C. This value of a is much shorter than we expect. However, it is on the same order as that derived by Jardim *et al.*²⁷ for Sm_{2-x}Ce_xCuO_{4-y}.

We note that a high- T_c superconductor ceramics YB₂Cu₄O₈ also undergoes successive superconducting transitions at T_{cu} (=80 K) and T_{cl} (=37 K).²⁸⁻³¹ The T dependence of ρ at $H=0$ and χ_{ZFC} and χ_{FC} at $H=0.1$ Oe is very similar to that observed in Ta₂S₂C. The ratio T_{cu}/T_{cl} (=2.16) is a little smaller than the ratio (=2.5) for Ta₂S₂C. A negative nonlinear magnetic susceptibility and a negative nonlinear electrical resistivity are observed at T_{cl} in the absence of H . These behaviors can be explained in terms of a 3D XY chiral glass model,³² where the frustration effect arises from the random distribution of π junctions with the negative Josephson coupling. In spite of the similarity between our result and the results on YB₂Cu₄O₈, it seems that our result is not directly related to the 3D XY chiral glass model, because of no anisotropic pairing symmetry of the $d_{x^2-y^2}$ wave type in our system.

E. Significance of mesoscopic grains in TaC layers

The possible existence of mesoscopic grains in the TaC layers of Ta₂S₂C would be essential to the successive transitions having a hierarchical nature. Both χ_{ZFC} and χ_{FC} are negative below T_{cu} . With decreasing T , they gradually reduce

to zero around T_{cu} in Ta_2S_2C . Such a diamagnetic behavior below T_{cu} could be described by a superconductive short-range order which occurs in each TaC layer. If each conductive layer is perfect or extends infinitely, any frustration could not be expected at all in the ordering process above T_{cl} . So we assume here that each conductive layer would be divided into clusters of a finite size. This is mostly the case in a real system because there exist various kinds of defects such as impurities, dislocations, twin boundaries, and so on. The universality class of the ordering in 2D superconductor belongs to that of a 2D XY ferromagnet. A Kosterlitz-Thouless (KT) type phase transition will appear at T_{cu} (which may be equal to a KT ordering temperature T_{KT}).³³ Then, the correlation length ξ of local superconductive order parameter increases divergently toward T_{cu} with decreasing T from the high-temperature side. If each 2D layer is not perfect, then the growth of ξ once stops at a certain geometrical length L_0 . Further growth of ξ should then be brought about by some intercluster interaction through the boundary region within each layer. If the intercluster coupling could be a Josephson type, a Josephson-coupled network among the short-range-ordered clusters are realized between T_{cu} and T_{cl} . At T_{cl} , the ordering characteristic will cross over successfully from the Josephson-coupled 2D network to a Josephson-coupled 3D network.

V. CONCLUSION

The nature of Ta_2S_2C ($T_{cl}=3.60\pm 0.02$ K and $T_{cu}=9.0\pm 0.2$ K) has been studied from the measurements of the

electrical resistivity and nonlinear ac magnetic susceptibility. The resistivity ρ at $H=0$ shows a local maximum near T_{cu} and a kinklike behavior around T_{cl} . The intermediate phase between T_{cu} and T_{cl} is a 2D superconducting phase occurring in the TaC layers, while the low-temperature phase below T_{cl} is a 3D superconducting phase. The linear and nonlinear susceptibilities χ'_1 , χ'_3 , χ'_5 , and χ'_7 in the absence of H start to appear below the onset temperature of irreversibility ($T=6.0$ K). The drastic growth of the in-plane coherence length below 6.0 K gives rise to the 3D superconducting phase below T_{cl} . The oscillatory behavior of χ''_3 , χ''_5 , and χ''_7 below T_{cl} is related to the nonlinear behavior arising from the thermally activated flux flow. The $\ln T$ dependence of ρ at $H=50$ kOe at low temperatures is due to the 2D weak-localization effect of the 2D electronic conduction in both 1T-TaS₂ and TaC layers.

ACKNOWLEDGMENTS

The authors are grateful to Pablo Wally, Technical University of Vienna, Austria (now Littlefuse, Yokohama, Japan) for providing them with the samples. The work at Tohoku University was supported by a Grant-in-Aid for Scientific Research from the Ministry of Education, Culture, Sports, Science and Technology, Japan.

*Electronic address: suzuki@binghamton.edu

†Electronic address: itsuko@binghamton.edu

‡Electronic address: noji@teion.apph.tohoku.ac.jp

§Electronic address: koike@teion.apph.tohoku.ac.jp

||Electronic address: juerg_walter@t-online.de

¹J. Walter, I. S. Suzuki, and M. Suzuki, Phys. Rev. B **70**, 064519 (2004).

²O. Beckmann, H. Boller, and H. Nowotny, Monatsch. Chem. **101**, 945 (1970).

³K. Sakamaki, H. Wada, H. Nozaki, Y. Ōnuki, and M. Kawai, J. Alloys Compd. **339**, 283 (2002).

⁴A. L. Giorgi, E. G. Szklarz, E. K. Storms, A. L. Bowman, and B. T. Matthias, Phys. Rev. **125**, 837 (1962).

⁵H. J. Fink, A. C. Thorsen, E. Parker, V. F. Zackay, and L. Toth, Phys. Rev. **138**, A1170 (1965).

⁶F. J. DiSalvo and J. E. Graebner, Solid State Commun. **23**, 825 (1977).

⁷F. J. DiSalvo and J. V. Waszczak, Phys. Rev. B **22**, 4241 (1980).

⁸A. Furukawa, Y. Oda, H. Nagano, and Y. Ōnuki, J. Phys. Soc. Jpn. **53**, 3938 (1984).

⁹P. Wally and M. Ueki, J. Solid State Chem. **138**, 250 (1998).

¹⁰P. Wally and M. Ueki, J. Alloys Compd. **268**, 83 (1998).

¹¹P. Wally and M. Ueki, Wear **215**, 98 (1998).

¹²M. Suzuki, I. S. Suzuki, and T.-Y. Huang, J. Phys.: Condens. Matter **14**, 5583 (2002).

¹³M. Polichetti, M. G. Adesso, and S. Pace, Eur. Phys. J. B **36**, 27

(2003).

¹⁴T. Ishida, T. Mikayama, and K. Okuda, J. Phys. Soc. Jpn. **66**, 2256 (1997).

¹⁵H. Fukuyama, Physica B & C **117B&118B**, 676 (1983).

¹⁶A. Gerber, T. Grenet, M. Cyrot, and J. Beille, Phys. Rev. Lett. **65**, 3201 (1990).

¹⁷A. Gerber, J. Beille, T. Grenet, and M. Cyrot, Europhys. Lett. **12**, 441 (1990).

¹⁸A. Gerber, Th. Grenet, M. Cyrot, and J. Beille, Phys. Rev. B **45**, 5099 (1992).

¹⁹A. Fukunaga, S. Chu, and M. E. McHenry, J. Mater. Res. **13**, 2465 (1998).

²⁰M. Terrones, W. K. Hsu, A. Schilder, H. Terrones, N. Grobert, J. P. Hare, Y. Q. Zhu, M. Schwoerer, K. Prassides, H. W. Kroto, and D. R. M. Walton, Appl. Phys. A: Mater. Sci. Process. **66**, 307 (1998).

²¹I. S. Suzuki, M. Suzuki, and J. Walter, Solid State Commun. **118**, 523 (2001).

²²R. P. Ziebarth, J. K. Vassiliou, and F. J. Di Salvo, J. Less-Common Met. **156**, 207 (1989).

²³Y. Hidaka, Y. Tajima, K. Sugiyama, F. Tomiyama, A. Yamagishi, M. Date, and M. Hikita, J. Phys. Soc. Jpn. **60**, 1185 (1991).

²⁴H. Fukuyama and K. Yosida, J. Phys. Soc. Jpn. **46**, 102 (1979).

²⁵Y. Kimishima, K. Inagaki, K. Tanabe, and Y. Ichiyanagi, Supercond. Sci. Technol. **13**, 295 (2000).

²⁶D. Di Gioacchino, F. Celani, P. Tripodi, A. M. Testa, and S. Pace,

- Phys. Rev. B **59**, 11539 (1999), and see also references therein.
- ²⁷R. F. Jardim, L. Ben-Dor, D. Stroud, and M. B. Maple, Phys. Rev. B **50**, 10080 (1994), and see also references therein.
- ²⁸M. Kawachi, M. Hagiwara, K. Koyama, and M. Matsuura, J. Phys. Soc. Jpn. **63**, 3405 (1994).
- ²⁹M. Matsuura, M. Kawachi, K. Miyoshi, M. Hagiwara, and K. Koyama, J. Phys. Soc. Jpn. **64**, 4540 (1995).
- ³⁰T. Yamao, M. Hagiwara, K. Koyama, and M. Matsuura, J. Phys. Soc. Jpn. **68**, 871 (1999).
- ³¹M. Hagiwara, T. Shima, T. Yamao, H. Deguchi, and M. Matsuura, Physica E (Amsterdam) **29**, 534 (2005).
- ³²H. Kawamura and M. S. Li, J. Phys. Soc. Jpn. **66**, 2110 (1997).
- ³³J. M. Kosterlitz and D. J. Thouless, J. Phys. C **6**, 1181 (1973).