

## General information, fields of biological research and international relations in Siberian Branch of Russian Academy of Science

Anna Barinova

### Siberian Branch of Russian Academy of Science, Russia

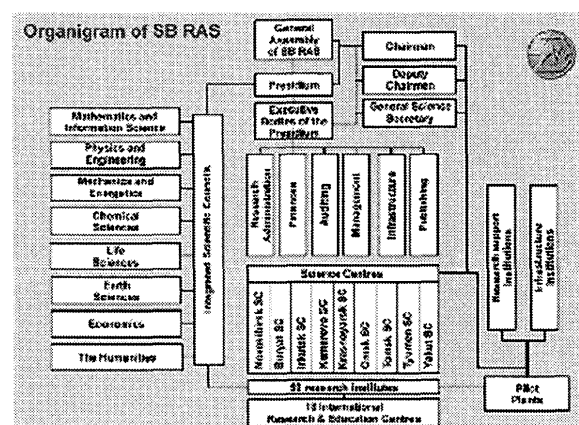
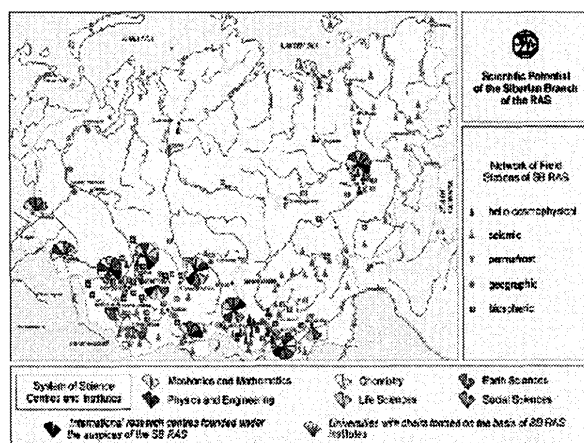
Siberia is an enormous area in north Asia, which is greater than one-half of the area of the Russian Federation. Thanks to Siberia's dimensions, it still contains large, relatively slightly impacted territories. Development of Siberia has always been associated with exploitation of its natural resources. To develop these resources, cities and industrial communities with fuel-power, mining and processing industry were built, and thousands of kilometers of petroleum and gas pipelines, railways and electric power transmission lines were laid. Since the 60-ies, the Siberian Branch of the Russian Academy of Sciences (SB RAS), aimed at promoting a more rapid growth of productive forces of Siberia, was designed. The future of Siberia largely depends on the scientific and educational potential accumulated here. Since the first days of its existence, the work of SB RAS has been based on the productive combination of fundamental and applied research and close relations of science and education.

The Siberian Branch is a network comprising science centers and institutes situated in administrative centers of the regions of Siberia : Novosibirsk, Tomsk, Krasnoyarsk, Irkutsk, Ulan-Ude, Yakutsk, Kemerovo, Tyumen and Omsk. There are also single institutes in Barnaul, Kyzyl and Chita.

There are 59 research institutions in SB RAS and design-and-technology institutes, whose areas of study cover physics and mathematics, engineering, life sciences, Earth sciences, humanities

and economics. A wide network of biological and geological research stations carry out field and stationary research in biosphere and geosphere. The science centers of the SB RAS are mostly arranged as isolated science towns near to large cities or form campuses inside the cities. The campuses (Akademgorodoks) territorially unite research and design institutes, pilot plants, residential areas equipped with social, cultural and health care services, kindergartens, schools. Eighteen International research Centers have been set up and are actively operating co-founded together with Siberian Branch of RAS by research institutions and Universities of European countries, the USA and Japan. These centers function as international non-governmental organizations and carry out research on major interdisciplinary problems. Institutes of the SB RAS work closely with universities and higher schools, with business and industry in their regions. SB RAS has always been interested in the practical application of its scientific, technological and designing results and maintained close connections with industrial enterprises and ministries. Design departments and pilot plants, established to finish research developments and further introduce them into industry, served as a basis for creating new types of high-technology industrial enterprises and attracting investments.

About half of scientific potential of SB RAS is concentrated in Novosibirsk Research Center, which



was the first to be founded in 1957. In Novosibirsk Center research in life sciences is performed by the Institute of Soil Science and Agrochemistry, the Central Siberian Botanical Garden, the Institute of Animal Systematics and Ecology, the Institute of Cytology and Genetics and the Institute of Bioorganic Chemistry. These institutes have greenhouses, vivaria and experimental farms, including a unique collection of genetic pool of native animals.

Presidium and the institutes of SB RAS invite

foreign scientists and international organizations to use the infrastructure for the joint research projects, practical training of young scientists, individual training for the students, and summer schools.

Home page of Siberian Branch of Russian Academy of Sciences is :

<http://www-sbras.nsc.ru/eng/>

The catalogue of major completed research and design developments of the institutes of the SB RAS can be found in :

<http://www-sbras.nsc.ru/eng/sbras/main-work.html>

